




CLEVERMIC

e-Blackboard Manual

(2018)



Contents

1、 Foreword	1
2、 Safety Instructions	2
3、 Router Setup	6
4、 Introduction to Product Technology	10
4.1 、 Specification.....	10
4.2 、 Function Introduction	10
4.3 、 Instructions To Remote Control.....	15
4.4 、 Instruction of Gesture Switch	19
4.5 、 Power on.....	19
4.6 、 Power off.....	19
4.7 、 Introductions of Energy Conservation	19
5、 FAQ and trouble shooting	20
5.1 、 FAQ	20
5.2 、 Trouble shooting.....	22
Disclaimer.....	24

1、Foreword

Notice:

1. This product must not be used under the condition of poor ventilation, dust, high temperature, low temperature or chemical substances.
2. This product should be used in the environment with no electromagnetic interference.
3. Strike this product with hard objects is strictly prohibited.

2、 Safety Instructions

- Please read and understand all safety instructions and operations before using Smart e-Blackboard.
- The user manual of Smart e-Blackboard should be kept for reference.

Declaration : This is the A class product, which may cause radio interference in the living environment. In this case, it may be necessary for users to take practical measures against the interference.

2.1 、 Power

Neither broken power cords and power plugs nor broken and loosen power outlets are allowed to use. Otherwise it may cause electronic shock or fire.

Do not touch the power plug with wet hands when pulling the power plug or inserting it into the power socket. Otherwise it may cause electronic shock.

Make sure the power cord is connected to ground. Otherwise, it may cause electronic shock or personal injury.

Make sure the power plug is firmly and correctly inserted into the power outlet. Otherwise it may cause a fire.

Do not bend or pull the power plug or load any heavy object on it. Otherwise it may cause a fire.

Do not connect multiple devices to the same power outlet. Otherwise a fire may be caused by overload.

Do not disconnect power cord while using this product. Otherwise the product may be damaged due to electric shock.

To disconnect the power from the device, the plug must be pulled



out of the power outlet, so the plug should be easy to operate.

Otherwise it may cause a fire or electric shock.

Please disconnect the plug from power outlet when nobody is in the room or no use of equipment for a long time.

Please disconnect the power cord under thunderstorms or lightning weather.

Please ensure that products with supply power higher than the safety voltage are installed or placed beyond the reach of children.

Please check and ensure that the main supply voltage matches the voltage on the machine label.

Please use the provided power cord. Do not use the power cord attached to other products. In turn, the standard power cord is not allowed for other equipments. Otherwise it may cause a fire or electric shock.

2.2 、 Installation

Before installation, please check the power voltage, wire size, power sockets, fuses or electrical switches meet requirements for Smart e-Blackboard (please refer to the product specifications)

Please ensure that product is moved by at least two persons. Otherwise, this product may fall and cause personal injury or be damaged.

Please do not install it in a bookcase or closet with poor ventilation. Otherwise, a fire may be caused by the high internal temperature of the product.

Please do not place the equipment in direct sunlight so as not to cause visual discomfort.

Please do not put the equipment in the places with strong electricity,



strong magnetic field or strong radiation that may direct it directly.

Installation of shade curtains and professional lamps in the classroom are recommended.

Highly careful operation during moving or placing is requested. Otherwise, this product may be damaged.

Do not put the front of this product to the ground. Otherwise, it has the high risk to be damaged.

To ensure the good heat dissipation of the equipment, leaving 10cm space for cooling and ventilation.

To ensure the best use of the product (easy to operate), it is recommended to install the Smart e-Blackboard along the ground 80-90cm away.

For safety in equipment use, the bearer of the Smart e-Blackboard must be sufficiently load-bearing (please refer to product specifications).

Authorized or professional staff are requested for installation. Otherwise the product may fall and cause personnel injury. Please be sure to use the specified wall mount bracket.

2.3 、 Battery

The waste battery in remote controller must be properly treated and recycled.

Please keep children away from the battery; do not put it into the fire.

2.4 、 Viewing distance

The best viewing distance is about 4 times the diagonal length of LCD screen.

Avoid direct sunlight on the Smart e-Blackboard and reverse viewing.



2.5 、 The surface of Smart e-Blackboard

Do not use hard or sharp objects to write or crash on the Smart e-Blackboard; please correctly use chalk or liquid pen.

When cleaning the surface of the Smart e-Blackboard, please power off first and disconnect the power cord.

After using, please use the specific eraser to clean the Smart e-Blackboard, do not use other hard objects to clean.

Cooling area is located on top of the machine. Please do not spray or pour liquid into the upper part, otherwise it may cause short circuit.

Do not intentionally damage all exposed interfaces of this product. Otherwise, the Smart e-Blackboard may not work well.

For internal cleaning of Smart e-Blackboard, please contact our customer service department.

2.6 、 LCD Screen

Please do not keep the high brightness picture on the screen for a long time.

2.7 、 Temperature and humidity

Please do not place candles, mosquito coils, cigarettes, and any heating devices around the product.

When the equipment is transferred from low temperature to high temperature place, to fully emanate the internal condensation, please wait for a period of time before power it on.

Please ensure that the equipment is running at a normal temperature of 0-40 degrees Celsius.

Please do not expose the equipment to rain, wet, water leaking or near water.

Please ensure that the operating environment is dry and ventilated, the normal working humidity is 10-90%.

3、Router Setup

Note:

1. For windows OS, both cable network and wireless network are set up trough the embedded router.
2. For windows OS,the network icon in the taskbar shows only the connection status.
3. All network changes are made through the router, including wired network/wireless network change,replace wifi connection.
4. Wired network has higher priority than wireless network.
5. Wireless network with blank space in the name is unselectable.

I. Enter 192.168.11.1 in brower, password is “admin”. See Fig 1.

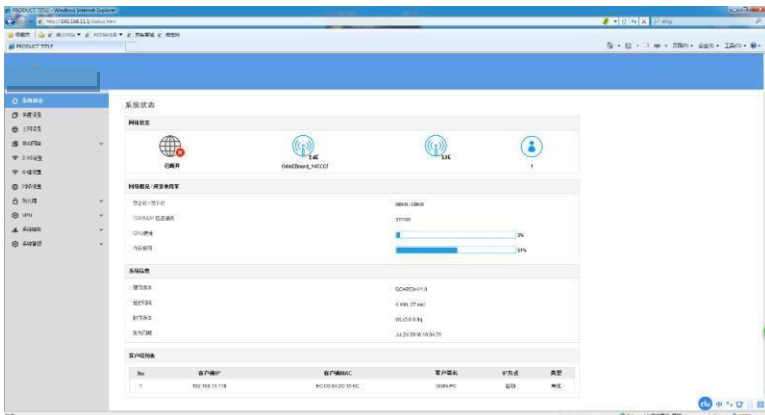


Fig 1

- 1、 Change the language. Choose the blue chinese “语言设置” and change Chinese to English. Choose “保存”(it means save in Chinese). See Fig 2 and Fig 3.

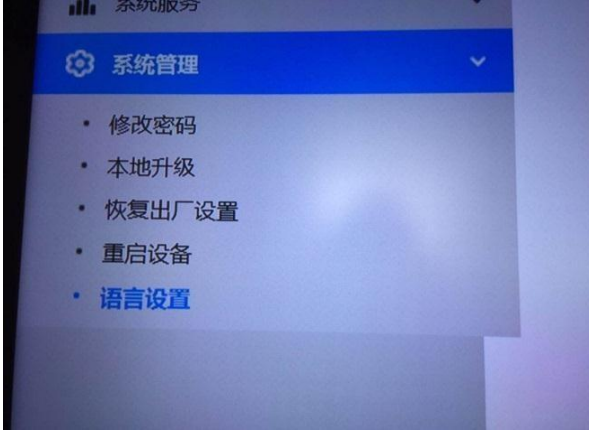


Fig 2

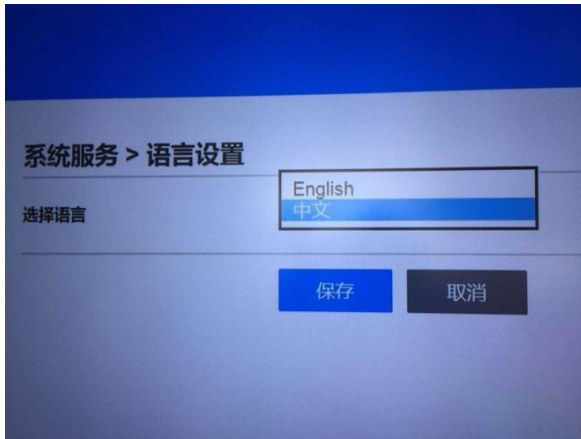


Fig 3

2、 When Fig 3 is saved, please erase IE historical records, reboot IE browser and login in again. See Fig 4.



Fig 4

II. Quick Wizard

1、 This is how to access internet through WLAN. See Fig 5.

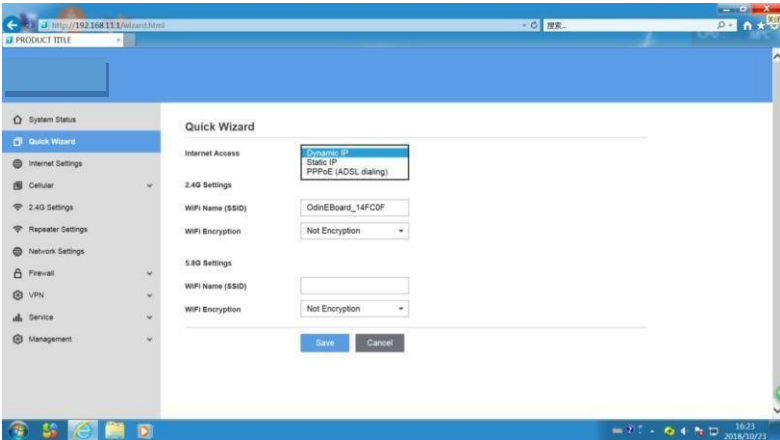


Fig 5

III. Connect Hotspot.

1. Set "Repeater Settings", enable repeater, scan, available wifi will show up. Choose one to connect and wait. It will work after several seconds. See Fig 6.

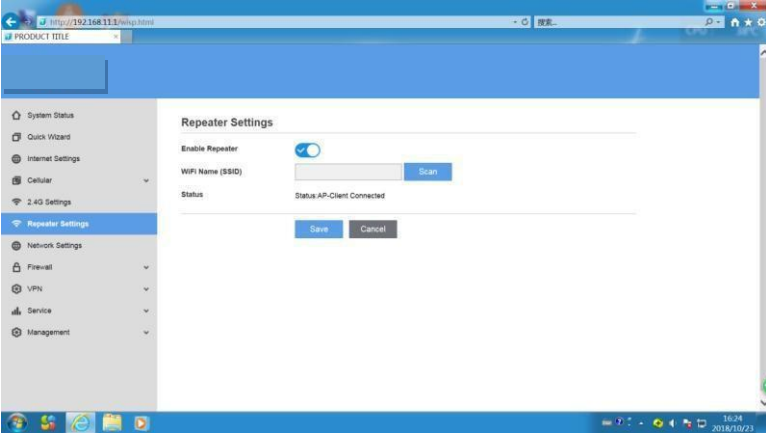


Fig 6

4、 Introduction to Product Technology

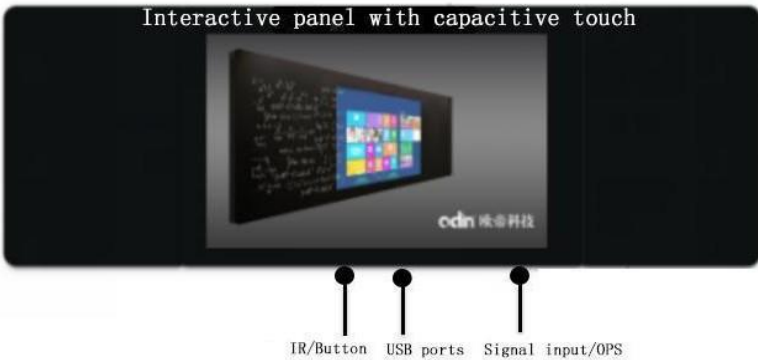
4.1 、 Specification

No.	Commodity	Dimension/mm	Weight/KG		Power/W (Full load)
			Middle	Two sides	
1	70" Smart e-Blackboard	4024x1224x90	50	35	350
2	75" Smart e-Blackboard		55	35	450
3	86" Smart e-Blackboard		60	35	550

4.2 、 Function Introduction

There may be slightly differences in functions, port numbers and operation of different devices. This introduction is only for standard products, please specify the actual product you have.

(1) Sketch map for function area



(2) Sketch map for interfaces.



No.	Name	Description
1	Screen	Turn on or turn off the backlight.
2	Source	Switch signal sources.
3	Mute	Switch the equipment to silent mode.
4	Power	Turn on or turn off the Smart e-Blackboard. Make sure the Windows OS is shut down before turn off the equipment.
5	IR	IR remote control receiver (Located at the middle part of standard Smart e-Blackboard).
6	USB 3.0	USB interface to connect USB devices.
7	USB 2.0	USB interface to connect USB devices.



No.	Name	Description
1	RS232	For the central control.
2	USB 2.0	USB interface to connect USB devices with the embedded OPS computer.
3	HDMI OUT	The synchronous output interface supports to output the same screen of the Windows signal from the embedded computer. The output resolution is the same with the original source.
4	USB 3.0	Highspeed USB interface to connect USB devices with the embedded computer.
5	TOUCH USB	Touch connector. Connect external devices with the touch cable to Smart e-Blackboard for bidirectional touch and display.
6	RJ45/NET	Network interface to connect with network cable.
7	AUDIO OUT	Multimedia audio output port.
8	VGA IN	Multimedia signal input port, access to devices with VGA output such as computer, set-top box or others, with max resolution to 1920*1080.

9	HDMI IN 1	Multimedia signal input port, access to devices with HDMI output such as computer, set-top box or others, with max resolution to 4K.
10	ANDROID UPGRADE	Android system upgrade button.
11	HDMI IN 2	Multimedia signal input port, access to devices with HDMI output such as computer, set-top box or others,
12	TV	TV analog signal (A-TV) (optional).
13	Antenna-1	Transmit Wi-Fi signal.
14	Antenna-2	Transmit Wi-Fi signal.
15	Antenna-3	2.4G Antenna, transmit wireless microphone

(3) OSD menu introduction:



Instruction: The shortcut window will pop out when the user slides across the LCD screen from bottom to middle with fingers, to switch between Windows OS and Android OS for equipments with dual systems, to switch signal sources, to move down or up signal screen and power off the operation system.

NO.	Function
1	Switch signal to Android mode
2	Switch signal to Windows mode
3	Switch signal to HDMI1 input mode
4	Switch signal to HDMI2 input mode
5	Switch signal to VGA input mode
6	Switch signal to TV input mode
7	Move down signal window
8	Switch backlight between day/night mode
9	Windows restore
10	AP network restore
11	Power off

4.3 、 Instructions To Remote Control

Besides normal function, the Smart e-Blackboard Remote Controller has the function of keyboard and mouse.

(1) Keys presentation




(2) Remote control function

Aim the remote control at the IR receiver, press this key to enter into remote control mode.



No.	Key	Function
1		Power
2		Volume
3		Mute
4		Signal source selection
5		Screen parameter selection
6		Direction Selection
7		Enter
8		Escape
9		Backlight control
10		Switch to Android system
11		Switch to embedded computer operation system
12		Switch to HDMI1 signal input
13		Switch VGA signal input

(3) Keyboard, mouse mode function

Aim the remote control at the IR receiver, press the remote control mode select key . 

When “Keyboard/Mouse mode” shows on the screen, the remote control is under Keyboard/Mouse mode.

Note: Windows operation system will request to save or close some files, please make sure Windows system is shutdown normally before the equipment is powered off.

Keys’ functions under Keyboard/Mouse mode are as belowed:

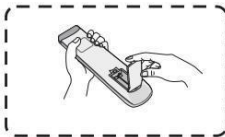
No.	Key	Function
1		Page selection
2		Windows start menu
3		Window switch
4		Window close
5	Number1-10	Number 1-10
6		Delete
7		Backspace
8		Enter for Keyboard mode; left click for Mouse mode.
9	F1-F12	Same as F1 - F12 for computer

10		Tab
11		Right click
12		Task manager combination
13		Space
14		Escape

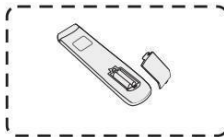
(4) Operation Instructions

Battery installation:

- I) Open the rear cover of the remote control;
- II) Install AAA batteries and make sure the positive and negative poles are placed properly. Do not mix old and new batteries.
- III) Close the battery compartment after the installation and make the buckle bucked.



(1)



(2)



(3)

Notes: The use of wrong type batteries has the risk of explosion. Please dispose the waste batteries properly to protect our earth.



4.4 、 Instruction of Gesture Switch

Gesture Switch is developed to operate Smart e-Blackboard more conveniently. Under any operation with any signal source, it is available to turn off the LCD screen by touching it with five fingers in any area for more than 1 second. Both the backlight and the touchable function are turned off. The screen is turned on by touching it with five fingers in any area for more than 1 second.

4.5 、 Power on

- (1) Connect the power cord to standard power socket;
- (2) Press the Power button to switch on the equipment; Note:

If the Smart e-Blackboard you purchase does not contain an embedded computer, it is requested to operate as following steps. Before Smart e-Blackboard installation, connect the attached TOUCH cable with USB interface on the external computer. When the TOUCH cable is not long enough, the USB extension cable in recommended brand is requested. Connect video input interface on Smart e-Blackboard with VGA output interface on computer.

4.6 、 Power off

- (1) Please use the touch menu, remote control or the Power button to turn off the screen.

Note: If an embedded PC is contained, please shut down the Windows operation system before you turn off the screen. Do not cut off the switch or the main power directly. The direct power failure may cause damage to the hardware of the machine.

4.7 、 Introductions of Energy Conservation

Smart e-Blackboard is in accordance with national energy

conservation standard of GB21520-2015 <Energy efficiency limits and energy efficiency ratings for computer monitors> and GB28380-2012 <Microcomputer energy efficiency limit and energy efficiency rating>.

5、FAQ and trouble shooting

5.1 、FAQ

(1) Why does the PPT file can't fully covered the screen?

For the display ratio of file has been set 4:3, reset the display ratio to 16:9.

(2) Why boot speed is slower in some classrooms?

Connected with a flash disk, computer virus, or damaged system disk, there will be specific problems of slow start. Please contact your local dealer for help.

(3) Why is multipoints touch feature of equipment unavailable?

Firstly the XP, IOS system don't support multi-touch .Recommend to install the Windows 7 professional version/flagship version or higher vision.

(4) Why is the external laptop device without sound?

If the HDMI cable is connected, please verify that the column of sound playback device is set as the default HDMI device.

(5) What object can replace the equipped capacitive touch pen with fluent writing without scratching screen?

You can temporarily use your fingers. You can always purchase more capacitive pens or pen nibs from local dealer.

(6) How to handle the problem of inaccurate touch?

If this happens, please turn on the computer system and do the following: Windows Start-control panel - Tablet PC – reset – calibrate.

**(7) Is it normal to feel the screen overheating after a period of using?
Are there any bad effects?**

It is normal just like the TV. It won't cause harmful effects.

(8) Will it be harmful for eye vision after long time use of Smart e-Blackboard?

Our eyes can recognize flickers under 50Hz and the eye muscles twinkle constantly to adjust to environment which causes the eyestrain. Smart e-Blackboard equips LCD screens of 60 Hz and 120 Hz which the human eyes can hardly feel screen flashing. So compared with other screens, Smart e-Blackboard is more friendly to vision. The product is in accordance with the international standard of IEC62471.

(9) Why is the Smart e-Blackboard without Magnetic adsorption function?

The magnetic adsorption function is optional, please consult your local seller whether the product you purchase has the function.

(10) Why can't ordinary chalk write on the Smart e-Blackboard?

Smart e-Blackboard supports ordinary chalk writing. After using dustless chalk, the surface of the Smart e-Blackboard will have a certain amount of grease which makes normal chalk can't write on. Please clean the surface with the equipped special cleanser or the special wet towel. If need to purchase a special cleaner, please contact your local dealer..

(11) If the operating system is reinstalled or restored, how to use the Smart e-Blackboard software?

If the operating is reinstalled or restored, please register for use online. The registration code is on the body of the Smart e-Blackboard and the CD. Please refer to instructions of the desktop of built-in system and the attached CD.

(12) How to realize the function of automatic restore and automatic boot system?

Please install the authorized boot system with automatically restore software or directly purchase from us.

5.2、 Trouble shooting

(1) Malfunction of remote control

① Make sure there is no block between the IR receiver and the remote control.

② Make sure batteries are placed properly or change the batteries.

(2) Auto shutdown

① The mode of automatic standby sleep is opened.

② Make sure the Power button is not squeezed.

③ Make sure the power is stable.

(3) The indicator light is not on.

Make sure the power of Smart e-Blackboard is normal.

(4) Can not Power on

① If Smart e-Blackboard can not be powered on with remote control, please check and make sure the remote control is in good condition.

② If the computer can not boot, force it to power off and restart after 15 minutes.

(5) Screen with no signal

① If the Smart e-Blackboard is equipped with embedded computer, please make sure the signal channel is in the corresponding mode channel.

② If the external computer is connected, please make sure the channel is correct and the signal cable is properly connected.

(6) Missed images and abnormal colors

① Adjust the hue, brightness, or contrast in the menu by remote control.

② If using external computer, please make sure the signal cable is properly connected.

(7) The screen is not full screen or out of range.

Make sure the screen resolution is 16:9.

(8) Unable to access the system (system auto repair interface)

If the Smart e-Blackboard is equipped with embedded computer, please use the remote control to adjust before rebooting into the system.

(9) Abnormal voice function

Adjust the VOL+/- by using the remote control.

(10) Wrong touch targeting

Make sure the alignment of windows system be in right use, please reset and use the function.

(11) Touch failure

① Please restart the Smart e-Blackboard (power off) and try again.

② If there is anti-virus software in the computer, turn it off and try again.

(12) If the surface of the Smart e-Blackboard is broken or damaged, please contact your local dealer.

Disclaimer:

The following factors are not covered by warranty:

- ★ **Damages caused by accident, earthquake, fire, flood, lightning or other natural disasters;**
- ★ **Damages caused by unauthorized production modifications;**
- ★ **Losses caused by repair or attempted repair by unauthorized persons;**
- ★ **Damages caused by user's personal physical damage, including moving or installing the equipment by themselves;**
- ★ **Losses caused by malicious damage;**
- ★ **Losses caused by wrong use of substitute products or components that do not meet the technical specifications of the product.**

Notes: The contents are subject to change without further notice.

All pictures are only for reference.